

Schuberth 
HEAD PROTECTION TECHNOLOGY

SONIC
COMMUNICATIONS



C2 Metallic Silver

C2 Black

C2 flip-up

C2—QUIET AS A WHISPER

With its extraordinarily good aero acoustical characteristics, the C2 Advanced Flip-up is the ideal helmet for the true touring lover: its whisper quiet 86.5 dB (A) at 100km/h on an un-faired motorcycle speaks for itself.

Visible locking indicators and the new chin fastener system provide even higher levels of safety.

The Optical Class 1 visor sets new standards of optical - and ensures your eyes don't get tired over long rides. The visor shield is scratch-resistant and has High-Clear 4 anti-fog coating. The helmet shell is made of S.T.R.O.N.G.—Fire, a special glass fibre reinforced Daroplast matrix. The integrated sun visor ensures better visibility in difficult lighting conditions and is fitted with an easy to use side slide

Aerodynamics

The C2 is the advanced flip-up helmet. It stands out from the crowd at all times through its advanced aerodynamics and agreeable riding characteristics. The integrated features make it ahead of its time.

C2 - advanced flip-up technology from the Schuberth wind tunnel makes your next touring journey a sheer riding pleasure.

- Aerodynamic shape
- Radial airflow lip
- Directionally stable
- No oscillatory tendency
- No buffeting

Aero acoustics of the C2

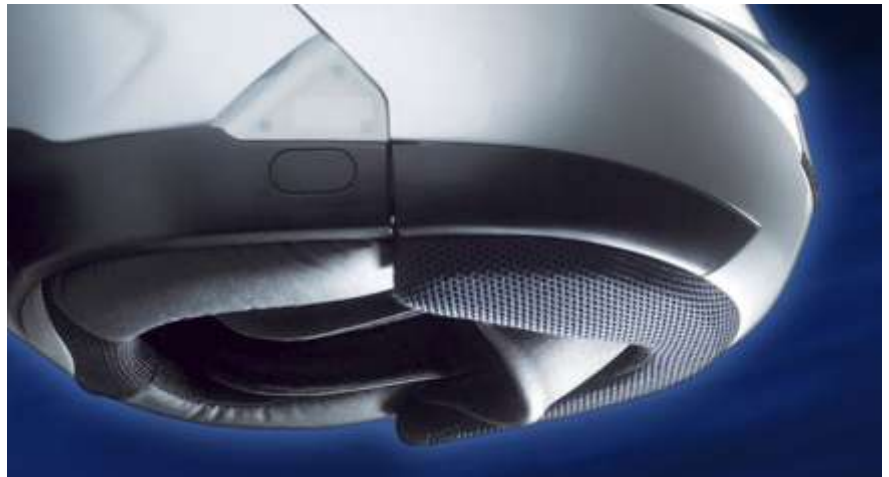
All Schuberth motorcycle and racing helmets are developed and optimised under scientific conditions in the SCHUBERTH wind tunnel.

Owing to its outstanding aero acoustic characteristics, the C2 is the ideal helmet for touring journeys.

Extremely quiet (due to acoustic collar)

"The quietest helmet available" according to test reports published by the motorcycle press

Only 86.5 dB (A) at 100 km per hour (with closed machines)



Acoustic Collar makes the Schuberth C2 an extremely quiet helmet

Visor

Visor plate

Rated at Optical Class 1, the highest quality rating for optical standards, the visor sets standards in respect of optical quality. It is practically distortion-free throughout the entire field of vision. The special polycarbonate material has exceptional transparency, strength and toughness, as well as resistance against impact and fracture.

Practically distortion-free throughout the entire field of vision
3D visor on average 2.5 mm thick
Scratch resistance on the outside with Anti-fog coating on the inside



Schuberth C2 Visor System

Visor mechanism

The new Easy Change visor mechanism makes changing visors extremely simple and quick.

Optical class 1

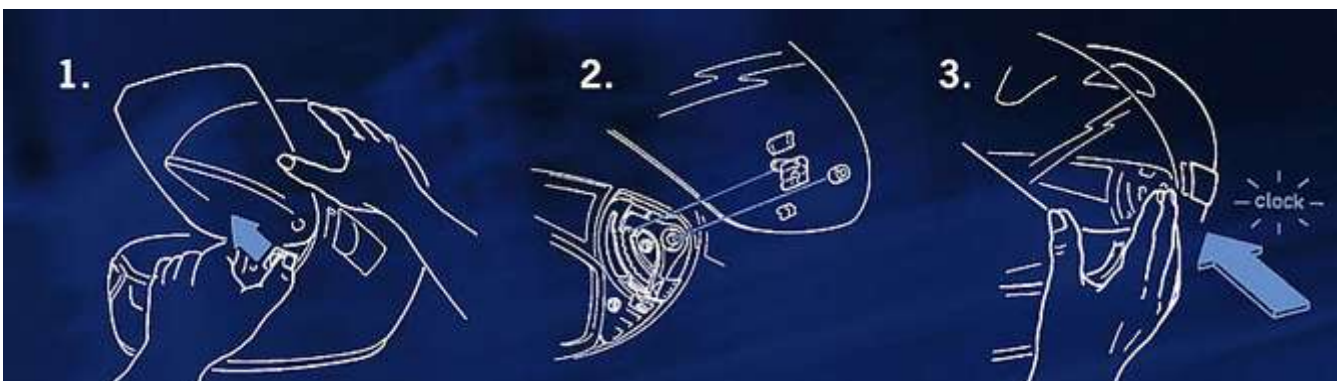
The optical class 1 rating is only granted when the main area of vision is absolutely distortion-free.

The C2's visor not only meets these highly demanding requirements but also gives motorcyclists distortion-free vision throughout virtually the entire field of vision.

This enables fatigue-free vision, making the helmet ideal for long periods of travel.



Above: Visor Mechanism of the C2 and Below: shows how to replace the C2 Visor



Integrated sun visor

The sun visor enables individual & quick adjustment according to lighting conditions. It's integrated within the helmet and can be moved up & down

Available tints:

80% grey tinted (included as standard)

60% brown tinted (available as an accessory)



Integrated Sun visor

Ventilation system

The C2 has an innovative and highly effective ventilation system.

Air Intake System:

- City position
- Chin vent
- Variable pad system
- Visor vent
- Large air intake over the head area

Air Extraction-System:

Active air Extraction

The innovative padding system ensures optimized airflow inside the helmet



Large Air Intake over head area

Summer and winter

The positioning of the head pads can be adjusted, enabling fast and easy adaptation of in-helmet head ventilation according to:

- The season
- Weather conditions
- Personal preferences



Chin Vent

O2 ventilation

About carbon dioxide:

In cold weather it is often so that with closed air supply the motorcyclist's neck zone becomes sealed off by hoods, scarves or neckerchiefs.

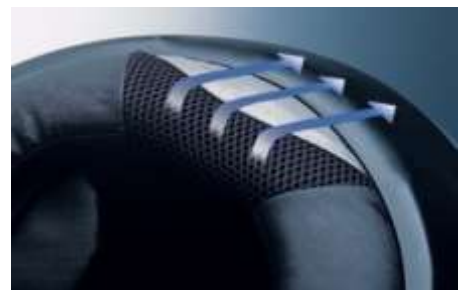
The concentration of carbon dioxide inside the helmet is a key safety criterion where preventing symptoms of fatigue and the thinning of breathable air.

No negative effects on health need be feared as long as the CO2 concentration remains below 3.5 %.

In the interests of ensuring stress-free workplace activity the level of CO2 concentration there should not exceed 0.5 %.

Even when the neck zone is sealed off as described above and with closed air supply, the helmet guarantees that the CO2 concentration remains below the 0.5% limit as from a speed of approx. 30 km/hr. This is due to the helmet's integrated system that ensures that the degree of in-helmet ventilation never falls below a necessary minimum in such situations.

In cases where the helmet is completely sealed as described above, the visor ought to be opened into what is effectively a city-travel position for safety reasons when idling for example at traffic lights – or when travelling through town at low speeds.



Active Air extraction



Adjustable Head pads

Weight: 1.710 Gr. of pure performance including sun visor

Standard: ECE-R 22.05

The C2 conforms to the ECE-R 22.05 standard. This test standard guarantees conformity to defined safety standards in respect of impact absorption, penetration resistance, lateral rigidity, retention system and field of vision. The approval guarantees that you have approval for all the countries which recognise the ECE standard.

